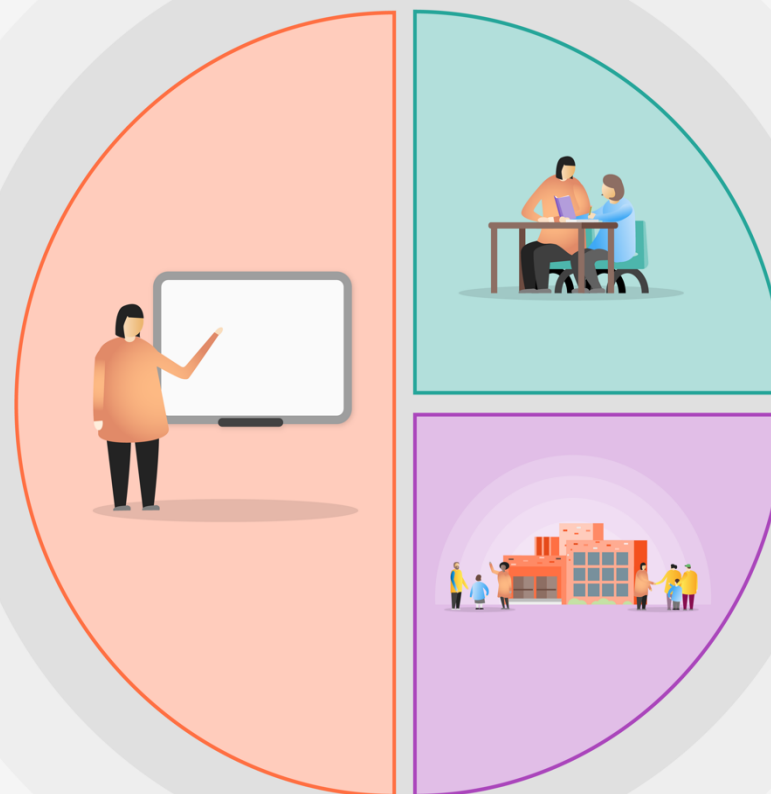


1 Teaching

- During Autumn and Spring terms, increase emphasis on learning time in Maths and English, ensuring key aspects of other subjects are covered to maintain a broad and balanced curriculum.
- Implement a curriculum that uses formative and summative assessment to address gaps in learning.
- Invest in high quality phonics and reading resources to support phonics and reading.
- Whole school focus on phonics teaching to ensure a consistent and systematic approach (including targeted CPD).
- Whole school focus on improving maths fluency.
- Homework focused on closing the gaps in reading, writing and maths.



2 Targeted academic support

- Nuffield Early Language Intervention
- Phonics 1:1 and small group intervention
- Reading and Maths 1:1 tuition
- Maths small group intervention
- Writing small group intervention

3 Wider strategies

- Forest School group sessions
- Increase sporting opportunities through funded after school clubs
- Technical support for remoted education and blended learning.
- Increased Outdoor Learning opportunities.
- Emotional Literacy Support (ELSA) for individuals and small groups